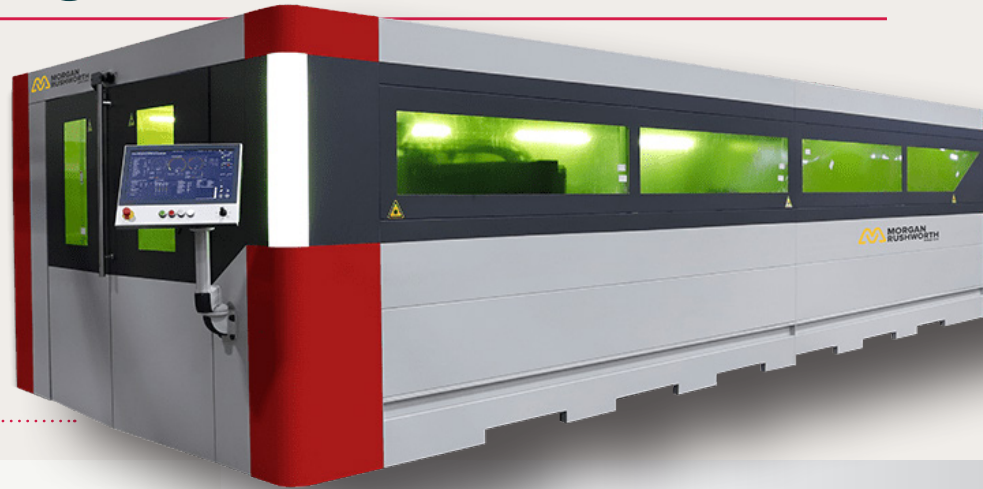




# XS Fibre Laser Cutting Machine 3000mm x 1500mm

Fibre laser technology in the XS cutter provides processing options for large and specialised material sizes. It delivers precise fibre laser cutting at rapid speeds, reaching 115 m/min, without any need for sheet repositioning.



## MACHINE CAPABILITY & FEATURES:

<b>SHEET SIZE</b>	3000mm x 1500mm
<b>SHEET THICKNESS</b>	20mm
<b>AUTOMATIC EXCHANGE TABLE</b>	2 Sheet, 2500kg capacity
<b>CUTTING SPEED</b>	Up to 115 m/min (Material dependant)
<b>AUTOMATIC NOZZLE CLEANING</b>	-
<b>BECKHOFF CNC &amp; SERVO MOTORS</b>	UK sourced

FIBRE LASER		4 kW
Maximum Cutting Capacity	Mild Steel	20
	Stainless Steel	12
	Aluminium	12
	Brass	6
	Copper	10



CNC controlled laser gantry



Multi-touch CNC control console

For further information please contact CMF:

19 October 2023; v1.0





Construction  
Metal Forming

Specialists in construction products

## XS Fibre Laser Cutting Machine CAD/CAM system

Lantek Expert is the World's most advanced CAD/CAM nesting software system, designed for automating the CNC programming of sheet metal machines.

Lantek Expert provides the most advanced nesting algorithms and machining strategies (Thinkingmetal Technology) for any of the existing cutting (laser, plasma, oxy-fuel, water jet technologies) and punching machines.

Lantek Expert achieves an outstanding performance with our Machine Tool Builder Partners, based on our close collaboration with them, but also optimises the results of machines from manufacturers like Amada, Esab, Ficep, Flow, HK Laser & Systems, Koike, Mazak, Messer, Prima Power, Salvagnini, Trumpf, and many other.

Lantek ensures excellent results for any cutting or punching machine today and in the future.



For further information please contact CMF:

19 October 2023; v1.0



**Construction Metal Forming**

Unit 3, Mamhilad Technology Park,  
Old Abergavenny Rd, Mamhilad,  
Monmouthshire, NP4 0JJ.

**Customer services:** 01495 761 080

**Sales enquiries:** 01495 788 936

**Technical support:** 01495 788 937

**e:** [info@cmf.uk.com](mailto:info@cmf.uk.com) | [www.cmf.uk.com](http://www.cmf.uk.com)